



Eddie Bauer® Smooth Mid Layer Fleece 1/2-Zip EB2360



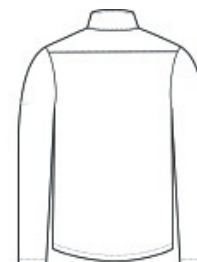
Built for versatility, this smooth-faced, brushed-back fleece is the ideal mid layer. Crafted from recycled polyester, this fleece makes a sustainable difference while keeping you warm and dry at work or play. Features include exposed molded zippers with Eddie Bauer logo pulls, open cuffs and open drop tail hem. Contrast Eddie Bauer heat transfer logo on left sleeve. Made of 7.4-ounce, 100% recycled polyester fleece.

CARE INSTRUCTIONS

Machine Wash Cold With Like Colors. Do Not Use Fabric Softener. Do Not Bleach. Tumble Dry Low. Cool Iron, if Necessary. Do Not Dry Clean.



front



back

HOW TO MEASURE



CHEST WIDTH

Measure under the arm and around the fullest part of the chest with arms down, keeping tape horizontal.

SIZE CHART

	XS	S	M	L	XL	2XL	3XL	4XL
Chest	32-34	35-37	38-40	41-43	44-46	48-50	52-54	55-57

COLOR INFORMATION



Black
PMS BLACK C



Cobalt Blue
PMS 654C



Iron Gate
PMS 7540C



River Blue Navy
PMS 533C